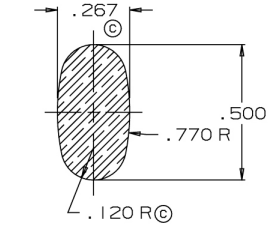


(E) REV'D FLINT ON HANDLE PER  
 SUPPLIER'S REQUEST FOR  
 STIPPLE WAS CRESSENT STYLE  
 9/10/2010  
 (D) INCREASE HANDLE THICKNESS  
 TO .120 R  
 (C) ADDED FILL POINTS  
 (A) REDUCE SLIDE  
 OPEN BODY 6/8/10  
 REVISIONS  
 DATE DRAWN 6/3/10  
 DRAWN BY ZANE  
 CHECKED BY  
 APPROX. WGT. 30.848oz  
 PRACTICAL FILL 750ML  
 MOONSHINE  
 MOLD REGISTER NO. L-925FT  
 SCALE OTHERWISE SPECIFIED  
 DATE 6/3/10

DRAWING NO: C-40B2 IE

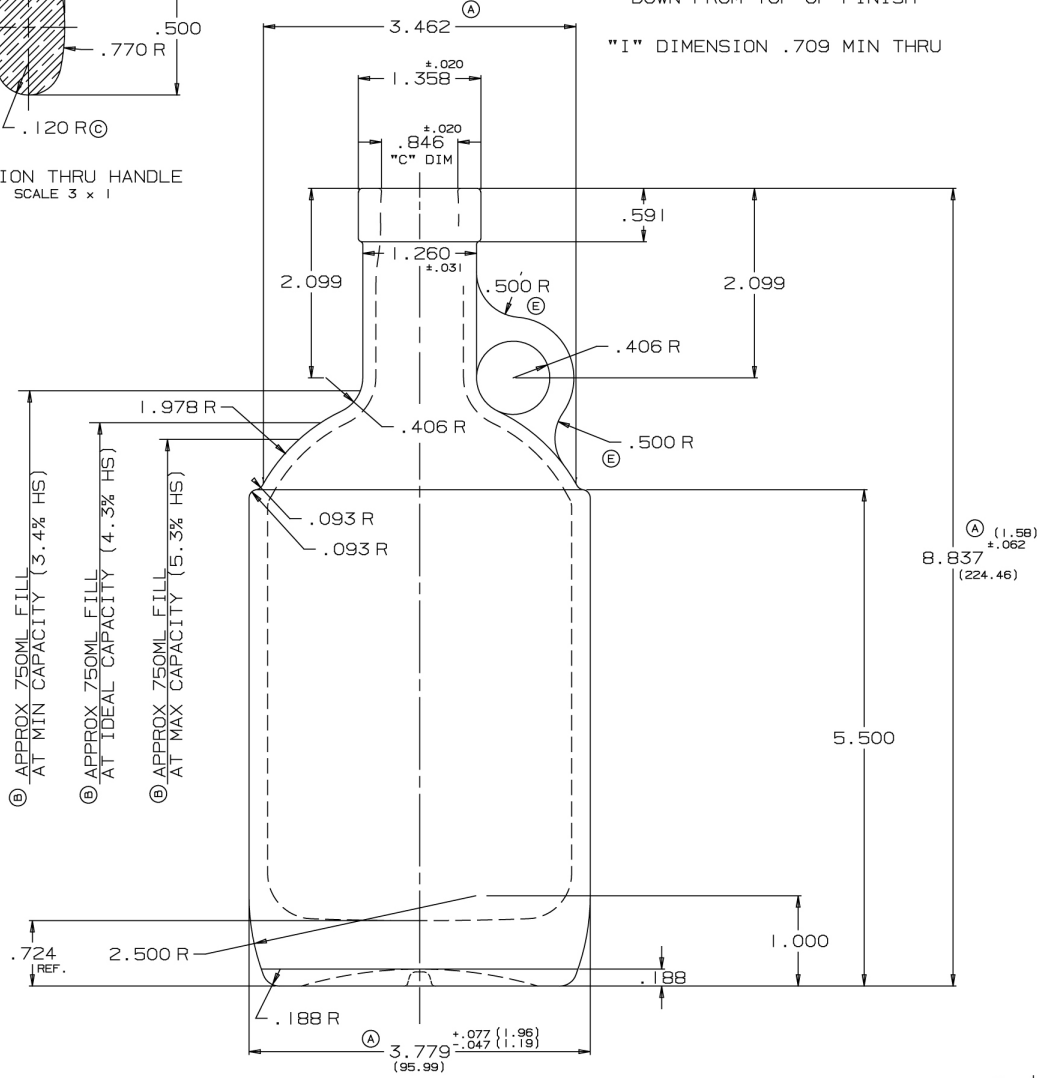
874.61 GRAMS FLINT

CUSTOMER	MOONSHINE
TITLE	750ML
PRACTICAL FILL	750ML
CAPACITY	782.6cc ± 7.4cc OF
FINISH	BAR TOP

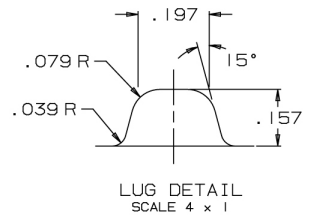
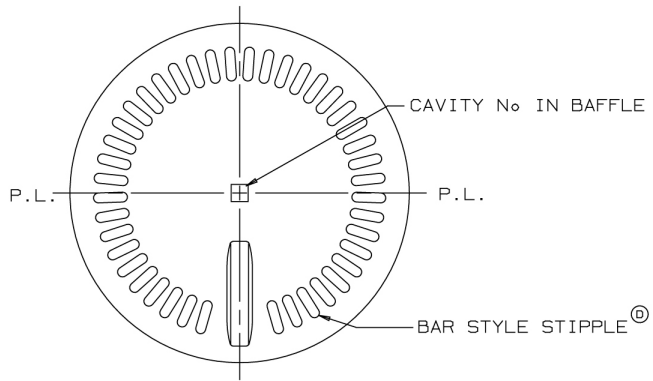


"C" DIMENSION CONTROLS CORK FIT AND MUST BE MAINTAINED FROM .118 TO .630 DOWN FROM TOP OF FINISH

"I" DIMENSION .709 MIN THRU



- ⓑ APPROX 750ML FILL AT MIN CAPACITY (3.4% HS)
- ⓑ APPROX 750ML FILL AT IDEAL CAPACITY (4.3% HS)
- ⓑ APPROX 750ML FILL AT MAX CAPACITY (5.3% HS)



# 750ML MOONSHINE JUG



P 888.326.5679 | F 847.486.5284 | E distiller@imperial-packaging.com  
 www.imperial-packaging.com