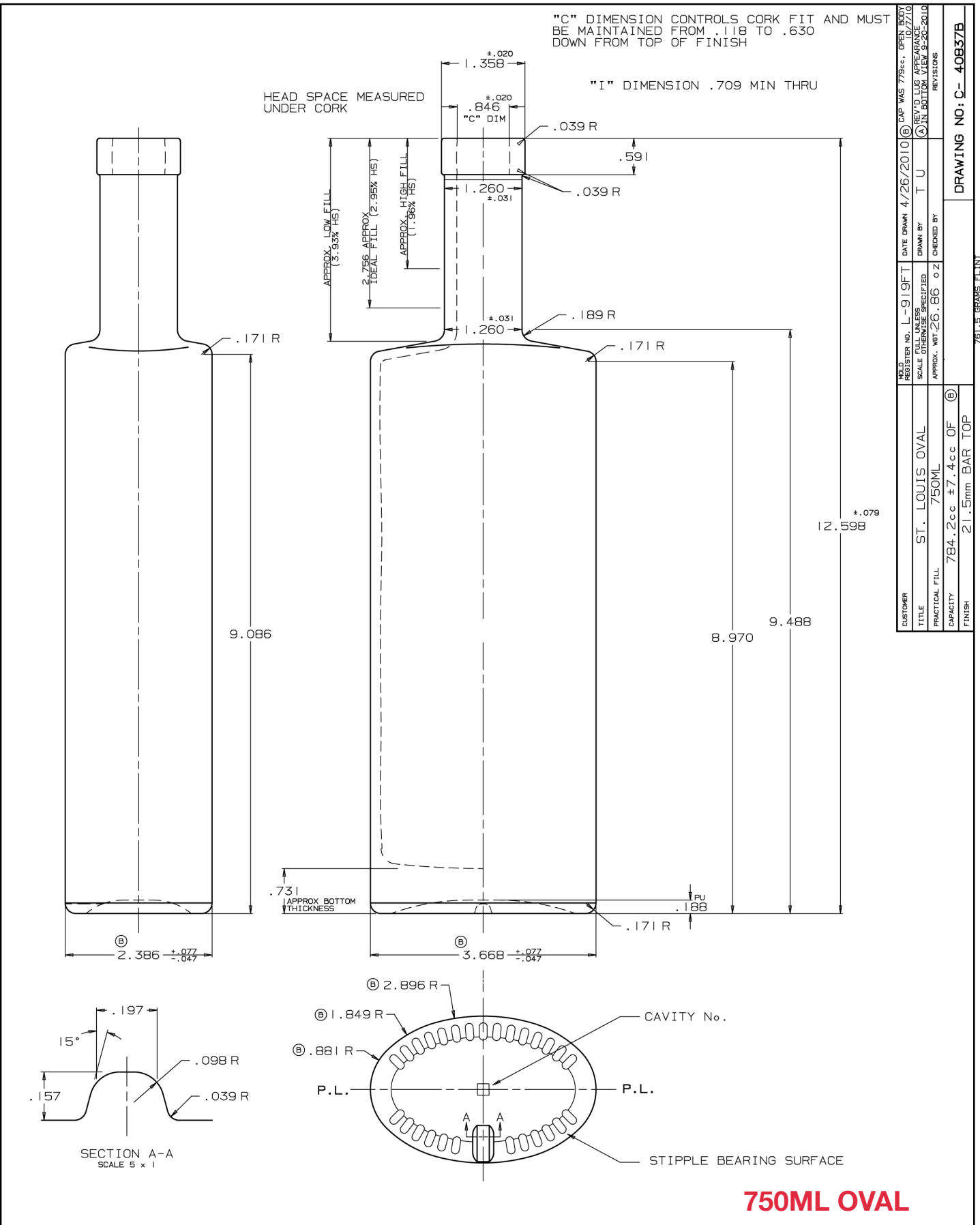


"C" DIMENSION CONTROLS CORK FIT AND MUST BE MAINTAINED FROM .118 TO .630 DOWN FROM TOP OF FINISH



CUSTOMER	REGISTER NO. 1-919FT	DATE DRAWN 4/26/2010	CAP WAS 779cc, OPEN BODY
TITLE	SCALE FULL UNLESS SPECIFIED	DRAWN BY T U	REV'D LUS APPROX 7/10
PRACTICAL FILL	APPROX. WGT. 26.86 OZ	CHECKED BY	REV'D IN BOTTOM VIEW 9-20-2010
CAPACITY	784.2cc ±7.4cc OF		REV'SIONS
FINISH	21.5mm BAR TOP		

DRAWING NO: C- 40837B

761.5 GRAMS FLINT

750ML OVAL



P 888.326.5679 | F 847.486.5284 | E distiller@imperial-packaging.com
 www.imperial-packaging.com