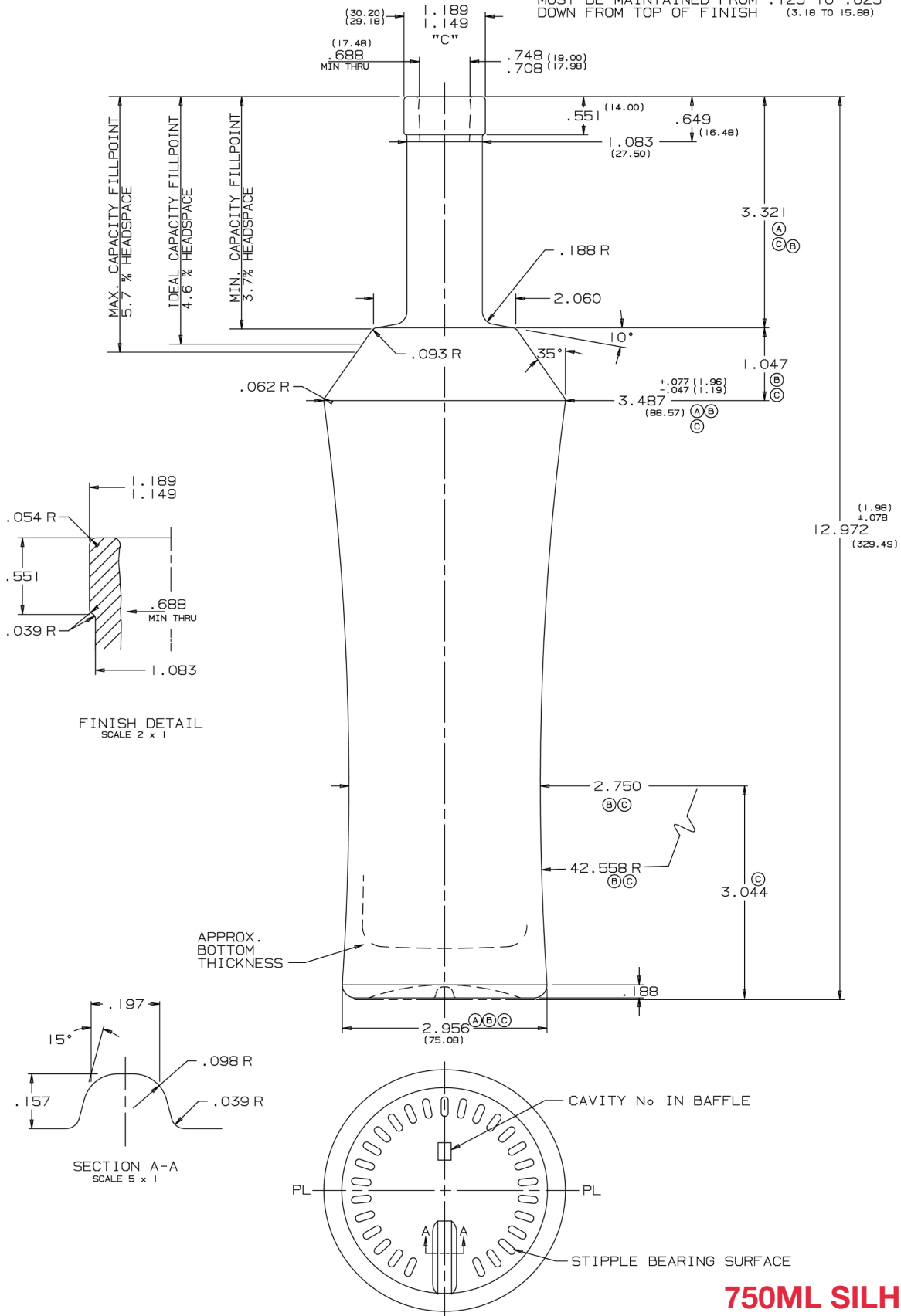


"C" DIMENSION CONTROLS CORK FIT AND MUST BE MAINTAINED FROM .125 TO .1625 DOWN FROM TOP OF FINISH (3.18 TO 15.88)



|  |                               |                                       |  |
|--|-------------------------------|---------------------------------------|--|
| MOLD REGISTER NO. UNLESS OTHERWISE SPECIFIED       |                               | APPROX. WGT. 30.773                   |  |
| TITLE SILHOUETTE                                   |                               | CAPACITY 785.0 cc ± 7.5 cc OF         |  |
| PRACTICAL FILL 750 ml                              |                               | FINISH 18mm BAR TOP                   |  |
| CUSTOMER   |                               | DRAWING NO: C-41042C                  |  |
| REVISIONS  |                               | 872.5 GRAMS FLINT                     |  |
| (C) REDUCE WGT. REUSE BODY FOR NEW WGT. & CAPACITY | (B) HGT WAS 13.529, OPEN BODY | (A) INCREASE NECK HGT ADJ. BODY SIZES |  |



P 888.326.5679 | F 847.486.5284 | E distiller@imperial-packaging.com  
 www.imperial-packaging.com